



The right "sandwich panel" fastening system every time:  
**Technical advice and support anytime, anywhere**



| Box size | Product       |      | Build up thickness (mm) |      | Material / Environment | Base material (drill Ø) mm |
|----------|---------------|------|-------------------------|------|------------------------|----------------------------|
|          | NAME - MESURE | CODE | MIN.                    | MAX. |                        |                            |

### Panel thickness 50 mm, fastening type

|     |                      |         |    |    |                          |                              |
|-----|----------------------|---------|----|----|--------------------------|------------------------------|
| 250 | SXCW-S19 - 6,5x105   | 997836  | 38 | 55 | A2 / C1-C4               | wood                         |
| 250 | SDTW-S19 - 6,5x115   | 1211471 | 45 | 70 | D <sup>1</sup> / C1-(C3) | wood                         |
| 250 | SXC5-S19 - 5,5 x 92  | 514448  | 49 | 67 | A2 / C1-C4               | steel 1,5-5                  |
| 250 | SDT5-S19 - 5,5 x 77  | 406522  | 39 | 55 | D <sup>1</sup> / C1-(C3) | steel 1,5-5                  |
| 250 | SXC14-S19 - 5,5 x 99 | 775732  | 48 | 67 | A2 / C1-C4               | steel 4-14                   |
| 250 | SDT14-S19 - 5,5 x 93 | 764782  | 48 | 67 | D <sup>1</sup> / C1-(C3) | steel 4-14                   |
| 250 | DT-S-S19 - 6,3x102   | 1083496 | 45 | 62 | A2 / C1-C5               | concrete (6,3-6,5)           |
| 250 | DT - S19 - 6,3x102   | 1083467 | 45 | 62 | D <sup>1</sup> / C1-(C3) | concrete (6,3-6,5)           |
| 250 | TDB-S-S19 - 6,3 x 76 | 1022753 | 35 | 66 | A2 / C1-C4               | steel <sup>2</sup> (5,3-5,8) |
| 250 | TI - S19 - 6,3 x 95  | 739763  | 40 | 65 | D <sup>1</sup> / C1-(C3) | concrete (4,8-5,2)           |

### Panel thickness 80 mm, fastening type

|     |                     |         |    |    |                          |                              |
|-----|---------------------|---------|----|----|--------------------------|------------------------------|
| 100 | SXCW-S19 - 6,5x135  | 997821  | 68 | 85 | A2 / C1-C4               | wood                         |
| 100 | SDTW-S19 - 6,5x135  | 1211560 | 65 | 90 | D <sup>1</sup> / C1-(C3) | wood                         |
| 100 | SXC5-S19 - 5,5x113  | 514607  | 59 | 87 | A2 / C1-C4               | steel 1,5-5                  |
| 100 | SDT5-S19 - 5,5x112  | 406524  | 54 | 90 | D <sup>1</sup> / C1-(C3) | steel 1,5-5                  |
| 100 | SXC14-S19 - 5,5x118 | 776324  | 67 | 86 | A2 / C1-C4               | steel 4-14                   |
| 100 | SDT14-S19 - 5,5x113 | 764790  | 68 | 87 | D <sup>1</sup> / C1-(C3) | steel 4-14                   |
| 100 | DT-S-S19 - 6,3x127  | 1083497 | 75 | 87 | A2 / C1-C5               | concrete (6,3-6,5)           |
| 100 | DT - S19 - 6,3x127  | 1083469 | 75 | 87 | D <sup>1</sup> / C1-(C3) | concrete (6,3-6,5)           |
| 100 | TDB-S-S19 - 6,3x100 | 1022758 | 60 | 90 | A2 / C1-C4               | steel <sup>2</sup> (5,3-5,8) |
| 100 | TI - S19 - 6,3x115  | 739762  | 60 | 85 | D <sup>1</sup> / C1-(C3) | concrete (4,8-5,2)           |

### Panel thickness 100 mm, fastening type

|     |                     |         |    |     |                          |                              |
|-----|---------------------|---------|----|-----|--------------------------|------------------------------|
| 100 | SXCW-S19 - 6,5x155  | 997840  | 78 | 105 | A2 / C1-C4               | wood                         |
| 100 | SDTW-S19 - 6,5x150  | 1211562 | 80 | 105 | D <sup>1</sup> / C1-(C3) | wood                         |
| 100 | SXC5-S19 - 5,5x133  | 514609  | 78 | 107 | A2 / C1-C4               | steel 1,5-5                  |
| 100 | SDT5-S19 - 5,5x137  | 406525  | 69 | 115 | D <sup>1</sup> / C1-(C3) | steel 1,5-5                  |
| 100 | SXC14-S19 - 5,5x147 | 1100368 | 86 | 116 | A2 / C1-C4               | steel 4-14                   |
| 100 | SDT14-S19 - 5,5x142 | 773496  | 87 | 116 | D <sup>1</sup> / C1-(C3) | steel 4-14                   |
| 100 | DT-S-S19 - 6,3x152  | 981885  | 95 | 112 | A2 / C1-C5               | concrete (6,3-6,5)           |
| 100 | DT - S19 - 6,3x152  | 1083470 | 95 | 112 | D <sup>1</sup> / C1-(C3) | concrete (6,3-6,5)           |
| 100 | TDB-S-S19 - 6,3x127 | 1022773 | 87 | 117 | A2 / C1-C4               | steel <sup>2</sup> (5,3-5,8) |
| 100 | TI - S19 - 6,3x145  | 1135415 | 90 | 115 | D <sup>1</sup> / C1-(C3) | concrete (4,8-5,2)           |

### Panel thickness 120 mm, fastening type

|     |                     |         |     |     |                          |                              |
|-----|---------------------|---------|-----|-----|--------------------------|------------------------------|
| 100 | SXCW-S19 - 6,5x185  | 998225  | 100 | 135 | A2 / C1-C4               | wood                         |
| 100 | SDTW-S19 - 6,5x175  | 1193886 | 105 | 130 | D <sup>1</sup> / C1-(C3) | wood                         |
| 100 | SXC5-S19 - 5,5x163  | 530498  | 99  | 137 | A2 / C1-C4               | steel 1,5-5                  |
| 100 | SDT5-S19 - 5,5x162  | 714752  | 105 | 137 | D <sup>1</sup> / C1-(C3) | steel 1,5-5                  |
| 100 | SXC14-S19 - 5,5x168 | 1185167 | 106 | 132 | A2 / C1-C4               | steel 4-14                   |
| 100 | SDT14-S19 - 5,5x160 | 516491  | 94  | 134 | D <sup>1</sup> / C1-(C3) | steel 4-14                   |
| 100 | DT-S-S19 - 6,3x178  | 779234  | 120 | 138 | A2 / C1-C5               | concrete (6,3-6,5)           |
| 100 | DT - S19 - 6,3x178  | 1083472 | 120 | 138 | D <sup>1</sup> / C1-(C3) | concrete (6,3-6,5)           |
| 100 | TDB-S-S19 - 6,3x152 | 1022777 | 112 | 142 | A2 / C1-C4               | steel <sup>2</sup> (5,3-5,8) |
| 100 | TI - S19 - 6,3x165  | 712332  | 110 | 135 | D <sup>1</sup> / C1-(C3) | concrete (4,8-5,2)           |

### Panel thickness 150 mm, fastening type

|     |                     |         |     |     |                          |                              |
|-----|---------------------|---------|-----|-----|--------------------------|------------------------------|
| 100 | SXCW-S19 - 6,5x235  | 1128596 | 150 | 187 | A2 / C1-C4               | wood                         |
| 100 | SDTW-S19 - 6,5x200  | 1193887 | 130 | 155 | D <sup>1</sup> / C1-(C3) | wood                         |
| 100 | SXC5-S19 - 5,5x193  | 1177942 | 127 | 167 | A2 / C1-C4               | steel 1,5-5                  |
| 100 | SDT5-S19 - 5,5x182  | 714755  | 114 | 160 | D <sup>1</sup> / C1-(C3) | steel 1,5-5                  |
| 100 | SXC14-S19 - 5,5x193 | 1190517 | 115 | 160 | A2 / C1-C4               | steel 4-14                   |
| 100 | SDT14-S19 - 5,5x186 | 1210294 | 120 | 160 | D <sup>1</sup> / C1-(C3) | steel 4-14                   |
| 100 | DT-S-S19 - 6,3x203  | 1083504 | 145 | 163 | A2 / C1-C5               | concrete (6,3-6,5)           |
| 100 | DT - S19 - 6,3x203  | 1083474 | 145 | 163 | D <sup>1</sup> / C1-(C3) | concrete (6,3-6,5)           |
| 100 | TDB-S-S19 - 6,3x178 | 1022779 | 138 | 168 | A2 / C1-C4               | steel <sup>2</sup> (5,3-5,8) |
| 100 | TI - S19 - 6,3x195  | 1135072 | 140 | 165 | D <sup>1</sup> / C1-(C3) | concrete (4,8-5,2)           |

### Panel thickness 175 mm, fastening type

|     |                     |         |     |     |                          |                              |
|-----|---------------------|---------|-----|-----|--------------------------|------------------------------|
| 100 | SXCW-S19 - 6,5x235  | 1128596 | 150 | 187 | A2 / C1-C4               | wood                         |
| 100 | SDTW-S19 - 6,5x230  | 1193888 | 160 | 185 | D <sup>1</sup> / C1-(C3) | wood                         |
| 100 | SXC5-S19 - 5,5x236  | 1235818 | 157 | 210 | A2 / C1-C4               | steel 1,5-5                  |
| 100 | SDT5-S19 - 5,5x226  | 714756  | 158 | 204 | D <sup>1</sup> / C1-(C3) | steel 1,5-5                  |
| 100 | SXC14-S19 - 5,5x218 | 1190516 | 140 | 185 | A2 / C1-C4               | steel 4-14                   |
| 100 | SDT14-S19 - 5,5x212 | 1199133 | 147 | 185 | D <sup>1</sup> / C1-(C3) | steel 4-14                   |
| 100 | DT-S-S19 - 6,3x229  | 1083508 | 175 | 189 | A2 / C1-C5               | concrete (6,3-6,5)           |
| 100 | DT - S19 - 6,3x229  | 1083476 | 175 | 189 | D <sup>1</sup> / C1-(C3) | concrete (6,3-6,5)           |
| 100 | TDB-S-S19 - 6,3x200 | 1191450 | 160 | 190 | A2 / C1-C4               | steel <sup>2</sup> (5,3-5,8) |
| 100 | TI - S19 - 6,3x235  | 504107  | 175 | 205 | D <sup>1</sup> / C1-(C3) | concrete (4,8-5,2)           |

D<sup>1</sup> is carbonsteel fastener + Duracoat® surface, where the durability of the fastener in (C3) class is suitable under special conditions

<sup>2</sup> - where needed pilot hole is according to the steel thickness: steel 1,5-4 = Ø5,3mm; 4,1-6,0 = Ø5,5mm; 6,0-10 = Ø5,7mm; >10 = Ø5,8



| Box size | Product       |      | Build up thickness (mm) |      | Material / Environment | Base material (drill Ø) mm |
|----------|---------------|------|-------------------------|------|------------------------|----------------------------|
|          | NAME - MESURE | CODE | MIN.                    | MAX. |                        |                            |

### Panel thickness 200 mm, fastening type

|     |                     |         |     |     |             |                              |
|-----|---------------------|---------|-----|-----|-------------|------------------------------|
| 100 | SXCW-S19 - 6,5x275  | 1128599 | 190 | 227 | A2 / C1-C4  | wood                         |
| 100 | SDTW-S19 - 6,5x250  | 1193910 | 180 | 205 | D1/ C1-(C3) | wood                         |
| 100 | SXC5-S19 - 5,5x236  | 1235818 | 157 | 210 | A2 / C1-C4  | steel 1,5-5                  |
| 100 | SDT5-S19 - 5,5x226  | 714756  | 158 | 204 | D1/ C1-(C3) | steel 1,5-5                  |
| 100 | SXC14-S19 - 5,5x243 | 1190370 | 165 | 210 | A2 / C1-C4  | steel 4-14                   |
| 100 | SDT14-S19 - 5,5x233 | 1229252 | 167 | 207 | D1/ C1-(C3) | steel 4-14                   |
| 100 | DT-S-S19 - 6,3x254  | 1083510 | 200 | 214 | A2 / C1-C5  | concrete (6,3-6,5)           |
| 100 | DT - S19 - 6,3x254  | 1083477 | 200 | 214 | D1/ C1-(C3) | concrete (6,3-6,5)           |
| 100 | TDB-S-S19 - 6,3x220 | 1194640 | 180 | 210 | A2 / C1-C4  | steel <sup>2</sup> (5,3-5,8) |
| 100 | TBT-S19 - 6,3x235   | 1188193 | 180 | 205 | D1/ C1-(C3) | concrete (4,8-5,2)           |

### Panel thickness 240 mm, fastening type

|     |                     |         |     |     |             |                              |
|-----|---------------------|---------|-----|-----|-------------|------------------------------|
| 100 | SXCW-S19 - 6,5x305  | 1126603 | 220 | 257 | A2 / C1-C4  | wood                         |
| 100 | SDTW-S19 - 6,5x310  | 1193913 | 240 | 265 | D1/ C1-(C3) | wood                         |
| 100 | SXC5-S16 - 5,5x286  | 1128563 | 207 | 260 | A2 / C1-C4  | steel 1,5-5                  |
| 100 | SDT5-S19 - 5,5x276  | 714757  | 208 | 254 | D1/ C1-(C3) | steel 1,5-5                  |
| 100 | SXC14-S19 - 5,5x293 | 1128575 | 215 | 270 | A2 / C1-C4  | steel 4-14                   |
| 100 | SDT14-S19 - 5,5x273 | 1187807 | 214 | 247 | D1/ C1-(C3) | steel 4-14                   |
| 100 | DT-S-S19 - 6,3x292  | 1083512 | 237 | 252 | A2 / C1-C5  | concrete (6,3-6,5)           |
| 100 | DT - S19 - 6,3x292  | 1083493 | 237 | 252 | D1/ C1-(C3) | concrete (6,3-6,5)           |
| 100 | TDB-S-S19 - 6,3x265 | 1047902 | 200 | 255 | A2 / C1-C4  | steel <sup>2</sup> (5,3-5,8) |
| 100 | TBT-S19 - 6,3x275   | 1188196 | 220 | 245 | D1/ C1-(C3) | concrete (4,8-5,2)           |

### Panel additional Fastening Systems + Sealing tapes

|      |                          |         |       |        |                 |                   |
|------|--------------------------|---------|-------|--------|-----------------|-------------------|
| 250  | SL2-S-A14 - 5,5x22       | 1159347 | 2x0,4 | 2x1,25 | A2-A4 / C1-(C5) | flashing          |
| 500  | SX5/8-S16 - 5,5x33       | 1122767 | 1,5   | 8      | A2-A4 / C1-(C5) | steel 1 - 5       |
| 1000 | SD3 - 5,5x25             | 60102   | 1,5   | 13     | D1/ C1-(C3)     | metal 1 - 3       |
| 500  | SD2-S-D7 - 4,8x23        | 1124098 | 2x0,4 | 2x1,0  | A2 / C1-C4      | flashing          |
| 500  | SD14-T15 - 5,5x32        | 973146  | 5     | 12     | D1/ C1-(C3)     | steel 4-14        |
| 1000 | ATC-D - 3,2x9,5          | 746463  | 3,5   | 6,3    | Alu / C1-C3     | closed rivet      |
| 1000 | SSC-D - 4,8x10           | 761285  | 2,5   | 5,2    | A2 / C1-C4      | closed rivet      |
| 1000 | RV6604-6-4W - 5,1x12     | 8389    | 1,5   | 6,3    | Alu / C1-C3     | rivet Bulb-Tite®  |
| 1000 | PolyGrip-TTO-D - 4,8x17  | 1237957 | 8,5   | 13     | Teras / C1      | rivet PolyGrip®   |
| 1000 | PolyGrip-ATO-D - 4,8x17  | 1237941 | 6,5   | 13     | Alu / C1-C3     | rivet PolyGrip®   |
| 1000 | TPR - 6,3x38             | 872497  | 0,5   | 6      | Alu / C1-C3     | peel-rivet        |
| 500  | TPR - 6,3x51             | 872499  | 0,5   | 19     | Alu / C1-C3     | peel-rivet        |
| 500  | SXW-S-A14 - 5,5x44       | 1133487 | 0,5   | 2x1,5  | A2 / C1-C4      | steel to wood     |
| 500  | DT-4,8x38 // T1 - 6,3x32 | 516447  | 0,5   | 10     | D1/ C1-(C3)     | steel to concrete |
| 500  | uputus seib A2-Ø40-27-8  | 501509  | Ø 8   | Ø 27   | A2 / C1-C4      | panel hole (Ø30)  |

D1 is carbonsteel fastener + Duracoat® surface, where the durability of the fastener in (C3) class is suitable under special conditions

<sup>2</sup> - where needed pilot hole is according to the steel thickness: steel 1,5-4 = Ø5,3mm; 4,1-6,0 = Ø5,5mm; 6,0-10 = Ø5,7mm; >10 = Ø5,8



| Box pcs / m | Product MATERIAL | CODE | Product (+/-) size (mm - m) thickness x width - length | Sticky (+) No glue (-) | Usage on panel |
|-------------|------------------|------|--|------------------------|----------------|
|-------------|------------------|------|--|------------------------|----------------|

|           |                             |         |                         |               |                   |
|-----------|-----------------------------|---------|-------------------------|---------------|-------------------|
| 5 / 50    | Polyeten-foam band          | 1034202 | PE - 8,0x100 mm - 10m   | no glue       | footing sealant   |
| 3 / 30    | Polyeten-foam band          | 1069696 | PE - 8,0x150 mm - 10m   | no glue       | footing sealant   |
| 35 / 420  | PVC-foam vapour seal        | 1015560 | PVC - 6x14mm - 12m      | sticky        | steel/wood rafter |
| 35 / 175  | PVC-foam vapour seal        | 1015563 | PVC - 12x14mm - 5m      | sticky        | concrete rafter   |
| 85 / 1275 | PVC-foam flashing seal      | 1015566 | PVC - 4,5x6mm - 15m     | sticky        | side-laping       |
| 83 / 1660 | PVC-foam flashing seal      | 1015567 | PVC - 4,0x6mm - 20m     | sticky        | side-laping       |
| 12 / 300  | Polyeten-profiliesheet seal | 1015568 | PE - 2,0x60mm - 25m     | sticky        | renovation        |
| 4 / 80    | Butyl sealant+PVC foil      | 1102606 | Butyl - 1,0x100mm - 20m | sticky        | air & water seal  |
| 6 / 120   | Butyl sealant+PVC foil      | 1102608 | Butyl - 1,0x 60mm - 20m | sticky        | air & water seal  |
| 22 / 231  | Butyl sealant string        | 1102609 | Butyl - Ø4,5mm - 10,5m  | sticky-string | side-laping       |

### Sokkli tihend TT-61, TT-62

Materjal: "polüeteen-vaht"  
Kokkurusutavus: min 20 %  
Paigaldustemperatuur: -50°C - +95°C



### Postitihend: TT-31

Üks pool iseliimuv

Aluspind: puit, metall

PVC-vaht, aurutõkke tihend:

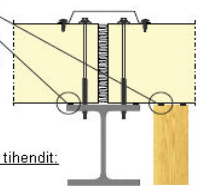
Kokkurusutavus: min. 30%

Paigaldustemperatuur: -30°C - +70°C

Kasutades "polüeteen-vaht" tihendit:

Kokkurusutavus: min 20 %

Paigaldustemperatuur: -50°C - +95°C



### Postitihend: TT-32

Üks pool iseliimuv

Aluspind: betoon

PVC-vaht, aurutõkke tihend:

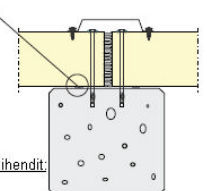
Kokkurusutavus: min. 30%

Paigaldustemperatuur: -30°C - +70°C

Kasutades "polüeteen-vaht" tihendit:

Kokkurusutavus: min 20 %

Paigaldustemperatuur: -50°C - +95°C



### Lüitepleki tihend TT-33, TT-34

Ühelt poolt liimuv

Teiselt poolt kleepuv

PVC-vaht

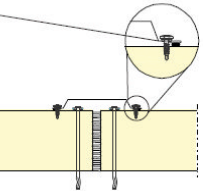
Kokkurusutavus: min. 25 %

Kasutus temperatuur: -30°C - +80°C

Polüeteen-vaht:

Kokkurusutavus: min. 20 %

Kasutus temperatuur: -50°C - +95°C



### Fassaadi teip TT-36 (renoveerimine)

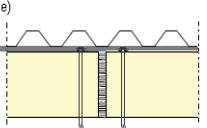
Materjal: Polüeteen-vaht

Ükspool iseliimuv

Teinepool kaetud PVC-kilega

Kasutatakse: Paroc paneelidele kinnitatavate detailide distants tihendina

Kasutustemperatuur: -30°C \_ +70°C



### Butüül-teip: TT-41, TT-43

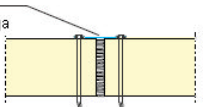
Kaetud UV-kindla PVC-kilega

Ühelt küljelt liimuv

Laius: 60 mm ja 100 mm

Kasutus temperatuur: -30°C - +80°C

Paneeli välispindade liitekohtade isoleerimiseks



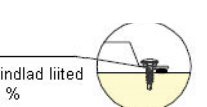
### Butüül-vorst: TT-51

Kasutus: vee ja bakteri kindlad liited

Kokkurusutavus: min. 20 %

Iseliimuv kõigist küljest

Kasutus temperatuur: -40°C \_ +90°C.



**SFS intec**

EXPERT IN FASTENING

Fastening industry you can trust

iDesigner assists structural engineers in selecting the right fastener when fastening various materials to steel, wood, concrete, aerated concrete, aluminium and brick. The system selects appropriate fasteners options based on the criteria entered by the user.

The solution is then provided with additional information such as a CAD image or fastening resistance.

Registreeru siin: <http://www.iDesigner.biz>

ESILEHT / INFO

Vali põhja materjal 1

TERAS PUIT BETOON KERGBETOON ALUM

Vali kinnitamisviis 2

TERASPLAAT VÕI LEHT LIISTUD JA ÜLEKATTELITUD LEHE ELEMENT

Vali kinniti omadused 3

12\* 2 mm

Kinniti kasutuskeskkond: Kaikki

Vettapidav: Kaikki

Kinniti pea: C1 C2 C3 C4 C5i C5m

Kinniti läbimõõt: C4 C5i C5m

Sobivad kinnitid 4

[www.iDesigner.biz](http://www.iDesigner.biz)  
INFO: +372 6610 600

Otsi

**Dependably well served:**  
**Meeting your business needs - tailored solutions from SFS intec.**



**Partners who really understand you:**  
**Experts for architectural exteriors.**



**The secure route to the right fastener solution:**  
**Simple, efficient planning aids at every step of the project.**



**Always one step ahead:**  
**An international network with local knowledge in every field.**



**Economy and security built in:**  
**Complete systems for every application.**



**Quality you can depend on:**  
**A network of quality-certified plants.**



**Reliable performance:**  
**Tested in-house, confirmed on site.**



**The right fastening system every time:**  
**Technical advice and support any time, anywhere.**



**More efficiency:**  
**Optimised supply chain management.**

**ESTONIA**

Töökoja 1 / Veerenni 53A  
EE-11313 Tallinn  
[ee.tallinn@sfsintec.biz](mailto:ee.tallinn@sfsintec.biz)  
T +372 66 10 600

**FINALND**

Tarrantie 4  
FI-08500 Lohja as.  
[fi.lohja@sfsintec.biz](mailto:fi.lohja@sfsintec.biz)  
T +358 19 357 0320

**SWEDEN**

Olivehällsvägen 10  
SE-645 42 Strängnäs  
[se.strangnas@sfsintec.biz](mailto:se.strangnas@sfsintec.biz)  
T +46 152 71 5012

**NORWAY**

Solheimveien 44  
NO-1473 Lørenskog  
[no.lorenskog@sfsintec.biz](mailto:no.lorenskog@sfsintec.biz)  
T +47 6792 1441

**SFS intec**

Turn ideas into reality.