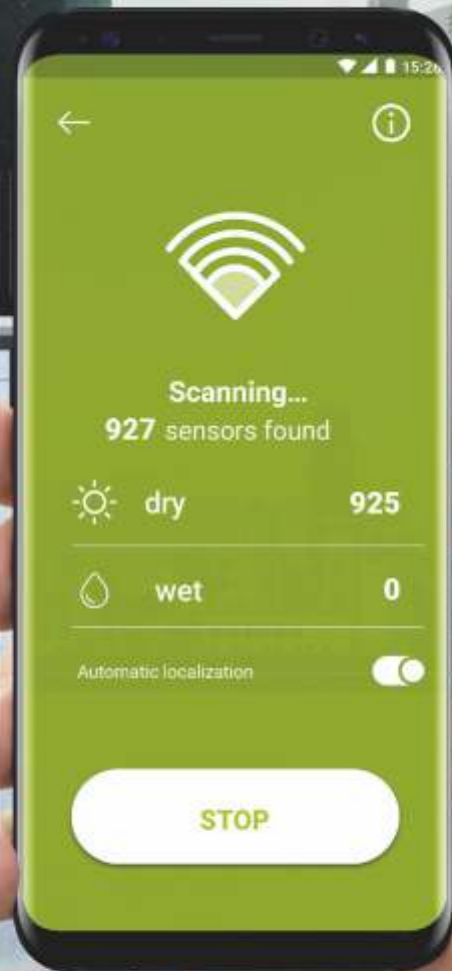


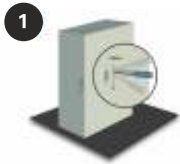


Leak detection



Discover water on time and prevent leakage with the sensors and scanner from SFS

How to assemble placement of sensors



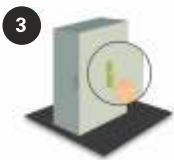
Step 1

Cut a slot of at least 100 x 30 mm into the underside of the thermal insulation.



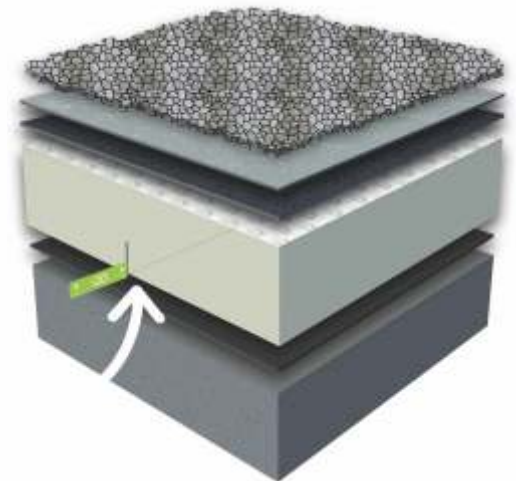
Step 2

Cut the edge of the slot on both sides with the knife.

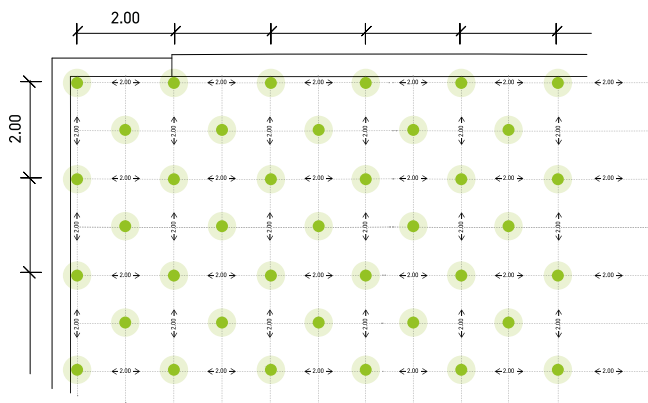


Step 3

Position the sensor as indicated by the arrow. (In the case of aluminum-faced insulation, you have to cut off an additional surface of 15 x 15 cm from the facing above the sensor).



Next; just lay the insulation as usual



Fastening grid

The fastening grid differs per roof surface and is determined by:

- The sensitivity to damage
- Wishes of the customer
- At the architect's request



Find your leak quickly and easily prevent damage

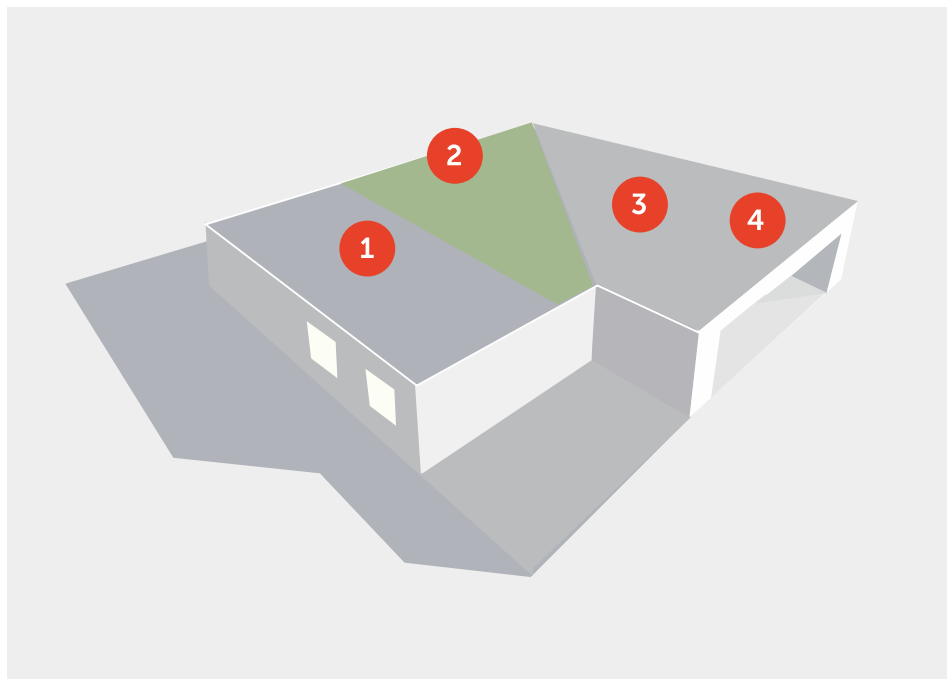
- Control your roof while walking over it without having to open it.
- Check the status of the sensors through all layers and loads.
- Save every inspection round for each of your sensor roofs automatically.

Scan with the app

The scanner in combination with the app (1) you can read the sensors (2) with FRID.

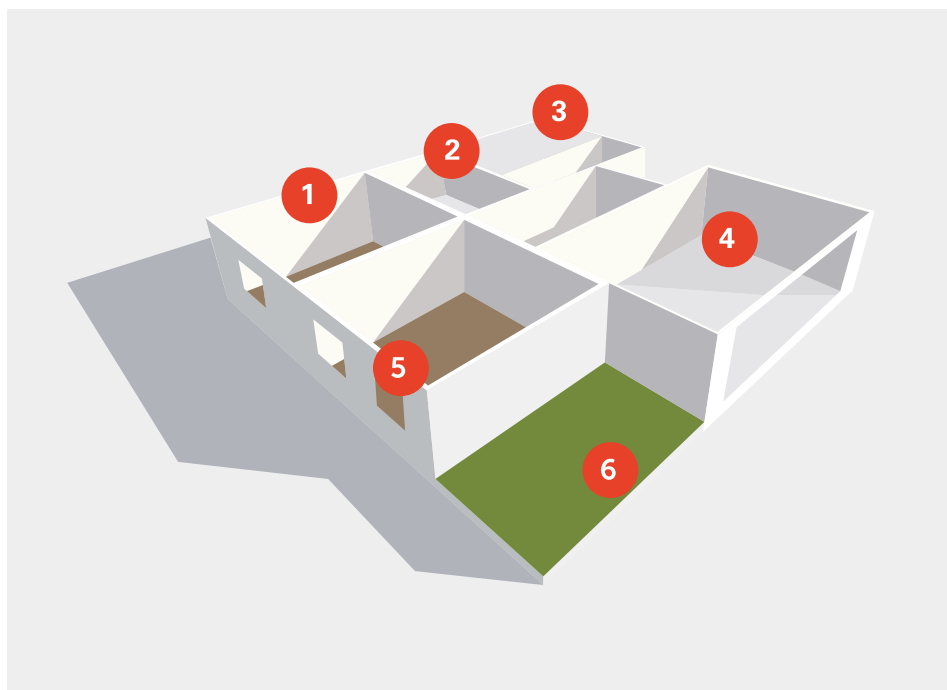


Applications for the roof and others



Roof applications

- 1 Warm roof
- 2 Green roof
- 3 Cold roof
- 4 Inverted roof



Other applications

- 1 Cellars
- 2 Wet spaces
- 3 Garages
- 4 Kitchen
- 5 Floor heating
- 6 Terrace & Balcony

Technical advice and sales service

SFS-stock
Allika tee 2, Peetri, Rae vald, 75312 Harjumaa
www.idesigner.biz
F + 372 6610 606

SFS-EE
ee.info@sfsintec.biz
www.sfsintec.biz/ee
T +372 6610 600

SFS-LT
lt.info@sfsintec.biz
www.sfsintec.biz/lt
T +370 699 24425