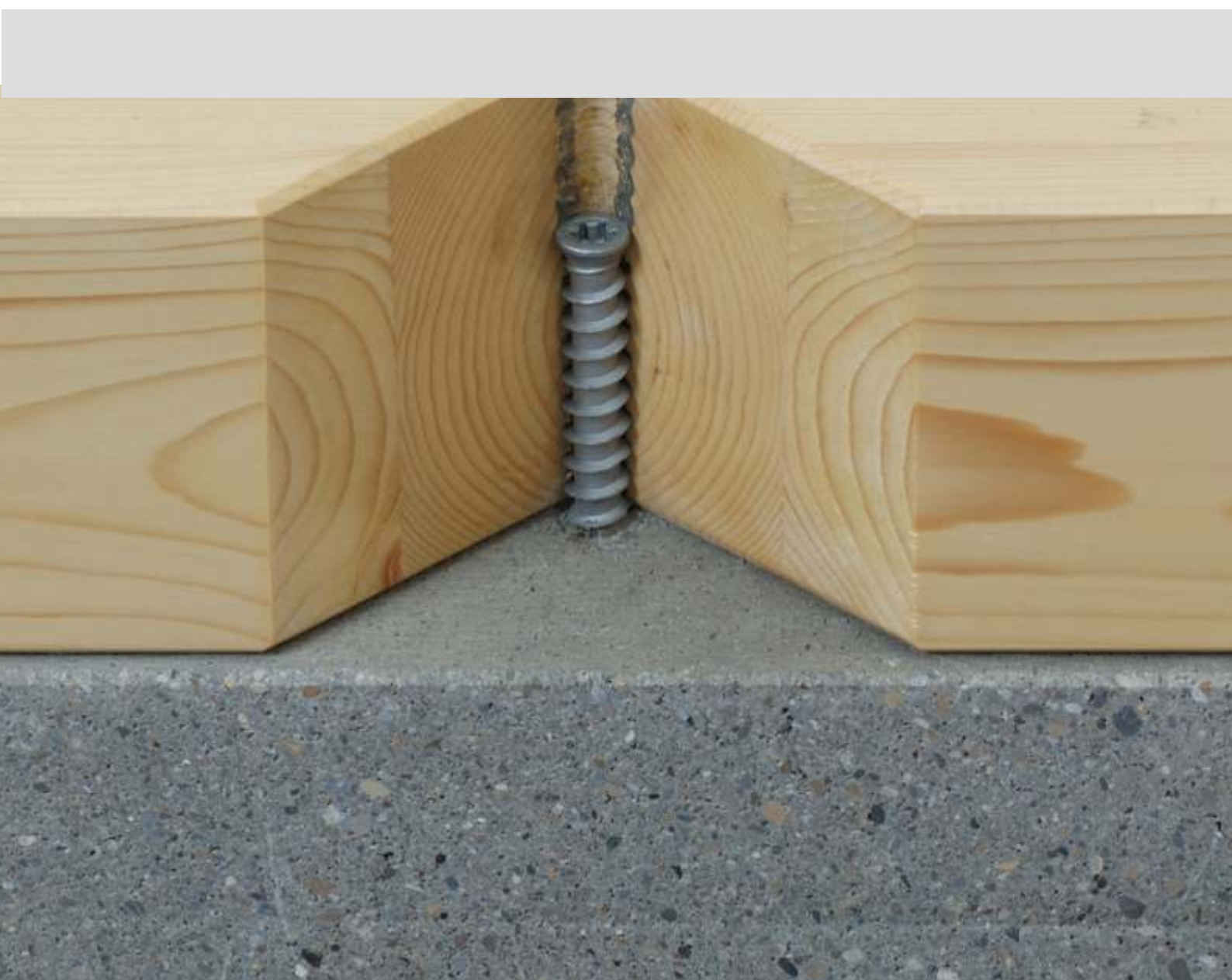




Baltic State 2017.11 Price-list
Concrete & Timber Work fasteners

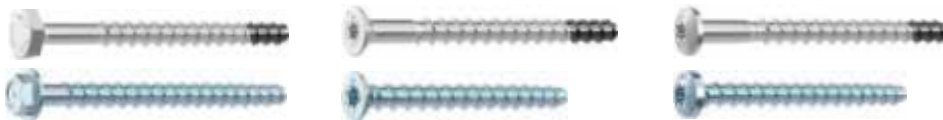




MULTI-MONTI®

- Fast and easy installation
- High security level
- No time-waste, the anchor carrying loads immediately
- Removable
- Approved products

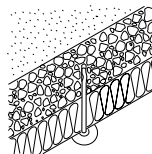
New

Multi-Monti® innovative screw anchor for concrete and masonry**MULTI-MONTI® in hardened steel and acid-resistant A4 and A5**  

Name	Material	Shape-head diameter	Pre-drilled	Driving	Max.fastening length	Article No	€/100
MULTI-MONTI-S-7,5x75	A4	H13 mm	6 mm	SW13	10 mm	1479976	
MULTI-MONTI-S-10x85	A4	H16 mm	8 mm	SW16	10 mm	1480024	
MULTI-MONTI-S-12x100	A4	H18 mm	10 mm	SW18	10 mm	1480026	
MULTI-MONTI-S-T30-7,5x75	A5	D14 mm	6 mm	T30	10 mm	1480027	
MULTI-MONTI-S-T30-7,5x85	A5	D14 mm	6 mm	T30	20 mm	1480028	
MULTI-MONTI-S-D14-7,5x75	A5	C14 mm	6 mm	T30	10 mm	1480029	
MULTI-MONTI-S-D14-7,5x85	A5	C14mm	6 mm	T30	20 mm	1480030	
MULTI-MONTI-plus-T-7,5x40	C steel	H14 mm	6 mm	SW10	5 mm	1480031	
MULTI-MONTI-plus-T-7,5x50	C steel	H14 mm	6 mm	SW10	15 mm	1480032	
MULTI-MONTI-plus-T-7,5x60	C steel	H14 mm	6 mm	SW10	5/25 mm	1480033	
MULTI-MONTI-plus-T-10x70	C steel	H19 mm	8 mm	SW13	5/20 mm	1480034	
MULTI-MONTI-plus-T-12x90	C steel	H22 mm	10 mm	SW15	15 mm	1480035	
MULTI-MONTI-plus-T-16x80	C steel	H24 mm	14 mm	SW24	10 mm	1540536	
MULTI-MONTI-plus-T-16x120	C steel	H30mm	14 mm	SW21	5/20 mm	1563976	
MULTI-MONTI-plus-T-T40-7,5x50	C steel	D16 mm	6 mm	T40	15 mm	1480036	
MULTI-MONTI-plus-T-T40-7,5x60	C steel	D16 mm	6 mm	T40	5/25 mm	1480037	
MULTI-MONTI-plus-T-T45-10x70	C steel	D20 mm	8 mm	T45	5/20 mm	1480038	
MULTI-MONTI-plus-T-T50-12x90	C steel	D24 mm	10 mm	T50	15 mm	1480039	
MULTI-MONTI-plus-T-D15-7,5x40	C steel	C15 mm	6 mm	T30	5 mm	1480040	
MULTI-MONTI-plus-T-D15-7,5x50	C steel	C15 mm	6 mm	T30	15 mm	1480041	
MULTI-MONTI-plus-T-D15-7,5x60	C steel	C15 mm	6 mm	T30	5/25 mm	1480042	
MULTI-MONTI-plus-T-D15-7,5x100	C steel	C15 mm	6 mm	T30	45/65 mm	1486584	
MULTI-MONTI-plus-T-D15-7,5x160	C steel	C15 mm	6 mm	T30	105/125 mm	1480045	

 C1-C4 Pre-drilled 4.8 resp. 6.3 mm.**spikeTwister DT-S, concrete fastening in acid-resistant steel 18/8/3, A4**

Name	Max. fastening length	Article No	€/100	Pcs/Box
DT-S-4,8x28	6 mm	500831		500
DT-S-4,8x32	10 mm	500833		500
DT-S-4,8x51	29 mm	500849		500
DT-S-4,8x89	57 mm	500854		250
DT-S-4,8x115	83 mm	500864		250
DT-S-4,8x140	115 mm	533573		100
DT-S-6,3x152	120 mm	500896		100
DT-S-6,3x178	146 mm	500920		100
DT-S-6,3x203	171 mm	500923		100
DT-S-6,3x229	197 mm	500925		50
DT-S-6,3x254	222 mm	500927		50
DT-S-6,3x279	247 mm	533576		50
DT-S-6,3x292	260 mm	500929		50



spikeTwister gives a better extract value

Set depth for DT-S-4.8: min. 25 mm. Drill SDS-4.8

Set depth for DT-S-6.3: min. 32 mm. Drill SDS-6.3

S19/7.3 and S29/3/40/80 spacers are used for sandwich element.
DT-S-6.3xL. Price, delivery time and quantity on request.

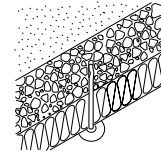
spikeTwister installation in concrete



E TA C1–C2 **CE** Pre-drilled 4.8 resp. 6.3 mm.

spikeTwister DT, concrete fastening in hardened steel,
Durocoat anti-corrosion protection

Name	Max.fastening length	Article No	€/100	Pcs/Box
DT-4,8x28	3 mm	516443		500
DT-4,8x38	13 mm	516447		500
DT-4,8x89	64 mm	516461		250
DT-4,8x140	115 mm	516469		100
DT-6,3x38	6 mm	500775		250
DT-6,3x51	19 mm	500778		250
DT-6,3x102	70 mm	533566		100
DT-6,3x152	120 mm	500785		100
DT-6,3x178	146 mm	500793		100
DT-6,3x203	171 mm	500798		100
DT-6,3x229	197 mm	500804		50
DT-6,3x254	222 mm	500810		50
DT-6,3x292	260 mm	500816		50
DT-6,3x356	324 mm	500823		50
DT-6,3x406	374 mm	500827		50



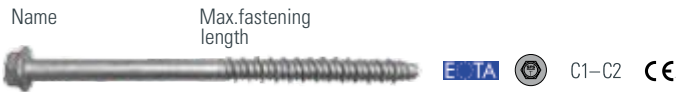
spikeTwister gives a better extract value

Set depth for DT-4.8: min. 25 mm. Drill SDS-4.8

Set depth for DT-6.3: min. 32 mm. Drill SDS-6.3

S19/7.3 and S29/3/40/8.0 spacers are used for sandwich element

Installation of wood and metal details in concrete



TI concrete screw in set hardened carbon steel,
Durocoat anti-corrosion protection – 8 mm hexagon head

Name	Max.fastening length	Article No	€/100	Pcs/Box	
TI-6,3x32	7 mm	1237839		500	Pre-drilled 5.0 mm Set depth: min. 20 mm
TI-6,3x45	20 mm	1237840		500	
TI-6,3x55	30 mm	1237841		250	
TI-6,3x75	50 mm	1237853		250	
TI-6,3x95	75 mm	1237855		250	
TI-6,3x115	95 mm	1237857		100	
TI-6,3x145	125 mm	1237861		100	
TI-6,3x165	145 mm	1261024		100	
TI-6,3x195	175 mm	1261027		100	
TI-6,3x235	215 mm	1261030		100	
TI-6,3x255	235 mm	1261032		100	
TI-6,3x275	255 mm	1261033		100	



TI concrete screw in set hardened carbon steel,
Durocoat anti-corrosion protection – T25 driving

Name	Max.fastening length	Article No	€/100	Pcs/Box	
TI-T25-6,3x30	10 mm	1237863		500	Pre-drilled 5.0 mm Set depth: min. 20 mm
TI-T25-6,3x40	20 mm	1237864		500	
TI-T25-6,3x60	40 mm	1237869		250	
TI-T25-6,3x80	60 mm	1237871		250	
TI-T25-6,3x100	80 mm	1237873		250	
TI-T25-6,3x120	100 mm	1237874		250	
TI-T25-6,3x140	120 mm	1237875		250	
TI-T25-6,3x160	140 mm	1237876		250	

Stainless steel
VD Max. penetration

Carbon steel
KL Fastening length

Aluminium
HD Drive head

Painted

Loaded in a magazine
W Material on spacer and diameter

All measurements in mm.

d Thread diameter L Length t Body thickness

WT-T Smart-Bite

In 2015, we launched the second generation of the WT-T screw, which has developed further to become even easier to use. A completely new screw with a patented design of the drilling head, which we call Smart-Bite, means that it fastens directly, with minimal pressure and low torque, at all angles. This means that the screw is easily placed exactly where it should be, the work goes more quickly and minimal effort is needed.

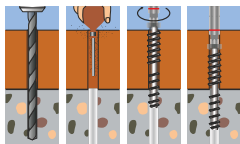
Other benefits of the new tip is that the risk of cracks is less as SFS intec's engineers have also improved the screw's ability to handle pressure, pull and shear loads.

Just like before, our new WT-T screw is a perfect fit for building with exposed wooden structures. The small screw head and the ability to lower the screw to any depth makes it almost completely invisible, unlike, for example nailed metal sheets or bolts. And because the screw has a quality finish, there is also no risk that the timber will lose its colour. The two screw threads, with slightly different pitches, make sure to compress the wood structure.



New!

For mounting wood-based products to concrete



TC-T Timber Connect innovative concrete screw

Name	Article No	Bits	Clamping length mm	€/100	Psc/Box	GNA	ETA/CE
MULTIMONTI-TC-T-7,5x100	1489053	T30	45 - 150		50	•	
MULTIMONTI-TC-T-10x130	1489059	T45	60 - 200		25	•	
MULTIMONTI-TC-T-12x160	1489065	T50	80 - 300		25	•	
MULTIMONTI-PLUS-T-(W44)-12x200	1489555	SW19	110 - 125		25		•
MULTIMONTI-PLUS-T-(W44)-12x240	1489089	SW19	150 - 165		25		•
MULTIMONTI- T-(HP) -7,5x320	1516679	SW13	265 - 285		25		•
MULTIMONTI- T-(HP) -7,5x380	1516680	SW13	325 - 345		25		•

GNA = German national approval Z-21.1-1879

Special screw for interaction of joints, concrete and wood



VB special screw in reinforced steel and mounting tools

Name	Article No	€/100
VB-48-7,5x100	777054	
VB-48-7,5x165	517065	
CF-VB/L-230V-COMPL-RENTAL	1240019	

V40-15VB	98173	
ZA 1/4"-E6,3	1118237	



Joining of nodes

in laminated wooden constructions with slotted steel plates



T profile Aluminium

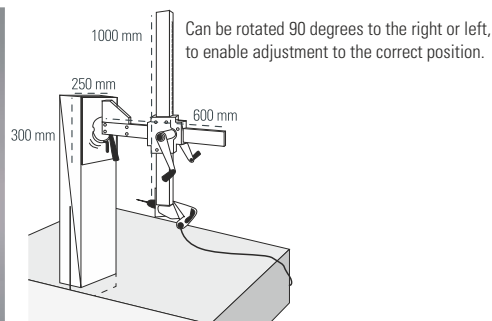
Name	Article No	€/1	Psc/Box
BP-A-80x109,4x120	1403054		25
BP-A-80x109,4x160	1403055		25
BP-A-80x109,4x200	1403056		15
BP-A-80x109,4x240	1403058		15
BP-A-80x109,4x2200	1403057		
BP-A-130x172x2176	1403051		

Finished aluminium profiles that are used with WS-T.



WS-T drill dowels in reinforced steel, surface treated

Name	Article No	Bits	€/100	Psc/Box
WS-T-7x73	1490470	T40		100
WS-T-7x93	1490471	T40		100
WS-T-7x113	1490472	T40		100
WS-T-7x133	1490473	T40		100
WS-T-7x153	1490474	T40		100
WS-T-7x173	1490475	T40		100
WS-T-7x193	1490476	T40		100
WS-T-7x213	1490477	T40		100
WS-T-7x233	1490478	T40		100



WS-T mounting tool, T40 bits

Name	Article No	€/1
CF-WS/H		
T40-200-HEX1/4"	930217	



Threaded rod for reinforcement of wooden constructions



WB threaded rod with wood threads in DIN 7998 reinforced steel and mounting tools

Name	Article No	€/100	Psc/Box	ETA/CE
WB-T-16 Length: 3000 mm	1029306		5	•
WB-T-20 Length: 3000 mm	1029309		5	•
DWA-12-M7 Wood spiral drill 400 mm	1119336		1	
DWA-15-M9 Wood spiral drill 400 mm	1119337		1	
ZE-16-WB Mounting sleeve	1039597		1	
ZE-20-WB Mounting sleeve	1039598		1	
ZA1/2"-11/4"-7UNC Mounting sleeve	1047884		1	
ZA1/2"-MK3 Mounting sleeve	1048760		1	



Besides WB 2400 mm, the 1st wood spiral drill contains a 400 mm,
and the 2nd a 1000 mm drill extension

Name	Article No	€/1	Psc/Box
DWA-12-ZA-SET	1112594		1
DWA-15-ZA-SET	1112595		1



Joining and reinforcement of wooden constructions



WR-T fully threaded countersunk drill screw, Durocoat rust protection

Name	Article No	Bits	€/100	Psc/Box	ETA/CE	C1-C4
WR-T-9x250	1512718	T40		50	•	
WR-T-9x300	1512719	T40		50	•	
WR-T-9x350	1512741	T40		50	•	
WR-T-9x400	1490435	T40		50	•	
WR-T-9x450	1490436	T40		50	•	
WR-T-9x500	1490437	T40		50	•	
WR-T-13x400	1490438	T50		25	•	
WR-T-13x500	1490439	T50		25	•	
WR-T-13x600	1490461	T50		25	•	
WR-T-13x700	1490462	T50		25	•	
WR-T-13x800	1490463	T50		25	•	
WR-T-13x900	1490466	T50		25	•	
WR-T-13x1000	1490468	T50		25	•	

Contact SFS for more information on dimensions and other technical details of the WR-T screw.

Joining wooden constructions



WT-S Double-threaded wood screw in authentic stainless steel/A2

Name	Article No	Bits	€/100	Psc/Box	ETA/CE	C1-C4
WT-S-5x45	1013500	T20		200		
WT-S-5x60	1013270	T20		200		
WT-S-6,5x65	1501737	T30		100	•	
WT-S-6,5x90	1501738	T30		100	•	
WT-S-6,5x130	1501739	T30		100	•	

WT-S Double-threaded wood screw in carbon steel, Durocoat rust protection

Name	Article No	Bits	€/100	Psc/Box	ETA/CE	C1-C4
WT-T-4,5x40	761067	T20		200	•	
WT-T-4,5x60	743430	T20		200	•	
WT-T-6,5x65	1501730	T30		100	•	
WT-T-6,5x90	1501731	T30		100	•	
WT-T-6,5x130/40	1501732	T30		100	•	
WT-T-6,5x130/55	1501733	T30		100	•	
WT-T-6,5x160	1501734	T30		100	•	
WT-T-6,5x190	1501735	T30		100	•	
WT-T-6,5x220	1501736	T30		100	•	
WT-T-8,2x160	1512756	T40		100	•	
WT-T-8,2x190	1512757	T40		100	•	
WT-T-8,2x220	1512785	T40		100	•	
WT-T-8,2x245	1512786	T40		100	•	
WT-T-8,2x275	1512787	T40		50	•	
WT-T-8,2x300	1512788	T40		50	•	
WT-T-8,2x330	1512790	T40		50	•	



Mounting tools

Name	Article No	€/1	Psc/Box
WT-T20	524949		1
WT-T30	857753		1
WT-T40	888896		1

Bits look pg 27

New!

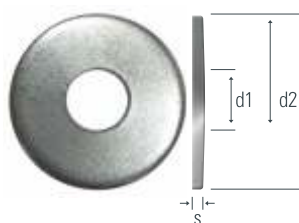
Mounting of wooden parts, wooden products and steel parts for wooden constructions.



Fully/partially threaded wood screw with hexagonal head and torx
in reinforced steel Electro-galvanised

Name	Article No	Bits	€/100	Psc/Box	ETA/CE
HT-T-H13-FT-8x60	1528407	Hexagon head/ T40		100	•
HT-T-H13-FT-8x70	1528419	Hexagon head/ T40		50	•
HT-T-H13-FT-8x80	1528431	Hexagon head/ T40		50	•
HT-T-H13-FT-8x100	1528433	Hexagon head / T40		50	•
HT-T-H13-PT-8x120	1528257	Hexagon head/ T40		50	•
HT-T-H13-PT-8x140	1528258	Hexagon head/ T40		50	•
HT-T-H13-PT-8x160	1528259	Hexagon head/ T40		50	•
HT-T-H13-PT-8x180	1528260	Hexagon head/ T40		50	•
HT-T-H13-PT-8x200	1528262	Hexagon head/ T40		50	•
HT-T-H13-PT-8x220	1528263	Hexagon head/ T40		50	•
HT-T-H13-PT-8x240	1528265	Hexagon head/ T40		50	•
HT-T-H13-PT-8x300	1528270	Hexagon head/ T40		50	•
HT-T-H15-FT-10x70	1528442	Hexagon head/ T40		50	•
HT-T-H15-FT-10x80	1528443	Hexagon head/ T40		50	•
HT-T-H15-FT-10x100	1528444	Hexagon head/ T40		50	•
HT-T-H15-PT-10x120	1528282	Hexagon head/ T40		50	•
HT-T-H15-PT-10x140	1528283	Hexagon head/ T40		50	•
HT-T-H15-PT-10x180	1528284	Hexagon head/ T40		50	•
HT-T-H15-PT-10x200	1527952	Hexagon head/ T40		50	•
HT-T-H15-PT-10x260	1528285	Hexagon head/ T40		50	•
HT-T-H15-PT-10x280	1528286	Hexagon head/ T40		50	•
HT-T-H15-PT-10x300	1528287	Hexagon head/ T40		50	•
HT-T-H15-PT-10x320	1528288	Hexagon head/ T40		50	•
HT-T-H15-PT-10x360	1528289	Hexagon head/ T40		50	•

FT=Fully threaded PT=Partially threaded



Washer for HT-T-H screw - DIN 440 - 8, 10 and 12mm

Name	Article No	€/100	Psc/Box	Dimension
HT-T-H washer - DIN-440R-ST*) Suitable for WFD Ø8 mm	951449		200	28(d2) x 9(d1) x 3(s)
HT-T-H washer - DIN-440R-ST*) Suitable for WFD Ø10mm mm	951450		200	34(d2) x 11(d1) x 3(s)
HT-T-H washer - DIN-MOR-ST*) Suitable for WFD Ø12mm mm	951451		100	45(d2) x 14(d1) x 4(s)

*)Contact SFS intec for prices and delivery times

New!

Mounting of wood-based products to wood



HT-T-FH Fully/partially threaded wood screw with large head Electro-galvanised

Name	Article No	Bits	Head Size	€/100	Psc/Box	ETA/CE
HT-T-FH-FT-6x40	1507716	T25	14 mm		200	•
HT-T-FH-FT-6x50	1507717	T25	14 mm		200	•
HT-T-FH-FT-6x60 -HP	1507819	T25	14 mm		200	•
HT-T-FH-FT-6x70	1507719	T25	14 mm		200	•
HT-T-FH-FT-6x80	1507720	T25	14 mm		100	•
HT-T-FH-PT-6x100	1507721	T25	14 mm		100	•
HT-T-FH-PT-6x120	1507722	T25	14 mm		100	•
HT-T-FH-PT-6x140	1507723	T25	14 mm		100	•
HT-T-FH-PT-6x160	1507724	T25	14 mm		100	•
HT-T-FH-PT-6x180	1507725	T25	14 mm		100	•
HT-T-FH-PT-6x200	1507726	T25	14 mm		100	•
HT-T-FH-PT-6x220	1517220	T25	14 mm		50	•
HT-T-FH-PT-6x240	1517235	T25	14 mm		50	•
HT-T-FH-PT-6x260	1517355	T25	14 mm		50	•
HT-T-FH-PT-6x280	1517357	T25	14 mm		50	•
HT-T-FH-PT-6x300	1517359	T25	14 mm		50	•
HT-T-FH-FT-8x80	1507727	T40	18 mm		50	•
HT-T-FH-FT-8x100	1507751	T40	18 mm		50	•
HT-T-FH-FT-8x120	1507758	T40	18 mm		50	•
HT-T-FH-PT-8x140	1507759	T40	18 mm		50	•
HT-T-FH-PT-8x160	1507760	T40	18 mm		50	•
HT-T-FH-PT-8x180	1507771	T40	18 mm		50	•
HT-T-FH-PT-8x200	1507772	T40	18 mm		50	•
HT-T-FH-PT-8x220	1507773	T40	18 mm		50	•
HT-T-FH-PT-8x240	1507774	T40	18 mm		50	•
HT-T-FH-PT-8x260	1507775	T40	18 mm		50	•
HT-T-FH-PT-8x280	1507776	T40	18 mm		50	•
HT-T-FH-PT-8x300	1507779	T40	18 mm		50	•
HT-T-FH-PT-8x320	1507780	T40	18 mm		50	•
HT-T-FH-PT-8x340	1507781	T40	18 mm		50	•
HT-T-FH-PT-8x360	1507783	T40	18 mm		50	•
HT-T-FH-PT-8x380	1507784	T40	18 mm		50	•
HT-T-FH-PT-8x400	1507785	T40	18 mm		50	•
HT-T-FH-FT-10x80	1507814	T40	22,5 mm		50	•
HT-T-FH-FT-10x100	1507815	T40	22,5 mm		50	•
HT-T-FH-FT-10x120	1507816	T40	22,5 mm		50	•
HT-T-FH-PT-10x140	1507786	T40	22,5 mm		50	•
HT-T-FH-PT-10x160	1507787	T40	22,5 mm		50	•
HT-T-FH-PT-10x180	1507789	T40	22,5 mm		50	•
HT-T-FH-PT-10x200	1507790	T40	22,5 mm		50	•
HT-T-FH-PT-10x220	1507801	T40	22,5 mm		50	•
HT-T-FH-PT-10x240	1507802	T40	22,5 mm		50	•
HT-T-FH-PT-10x260	1507803	T40	22,5 mm		50	•
HT-T-FH-PT-10x280	1507806	T40	22,5 mm		50	•
HT-T-FH-PT-10x300	1507807	T40	22,5 mm		50	•
HT-T-FH-PT-10x320	1507808	T40	22,5 mm		50	•
HT-T-FH-PT-10x340	1507809	T40	22,5 mm		50	•
HT-T-FH-PT-10x360	1507810	T40	22,5 mm		50	•
HT-T-FH-PT-10x380	1507811	T40	22,5 mm		50	•
HT-T-FH-PT-10x400	1507812	T40	22,5 mm		50	•

FT=Fully threaded PT=Partially threaded

New!

Mounting of wood-based products to wood in A2



HT-S-FH Fully/partially threaded wood screw with large head A2/stainless steel

Name	Article No	Bits	Head Size	€/100	Psc/Box	ETA/CE
HT-S-FH-FT-6x50	1489625	T25	14 mm		200	•
HT-S-FH-FT-6x70	1507901	T25	14 mm		100	•
HT-S-FH-PT-6x100	1507906	T25	14 mm		100	•
HT-S-FH-PT-6x120	1507907	T25	14 mm		100	•
HT-S-FH-FT-8x60	1507903	T40	18 mm		50	•
HT-S-FH-FT-8x80	1507904	T40	18 mm		50	•
HT-S-FH-FT-8x100	1507905	T40	18 mm		50	•
HT-S-FH-FT-8x120	1499849	T40	18 mm		50	•
HT-S-FH-PT-8x140	1507908	T40	18 mm		50	•
HT-S-FH-PT-8x160	1507909	T40	18 mm		50	•
HT-S-FH-PT-8x180	1507910	T40	18 mm		50	•
HT-S-FH-PT-8x200	1507911	T40	18 mm		50	•
HT-S-FH-PT-8x240	1507913	T40	18 mm		50	•
HT-S-FH-PT-8x300	1507915	T40	18 mm		50	•

FT=Fully threaded PT=Partially threaded

New!

Special screw for mounting solar cell fittings to wood

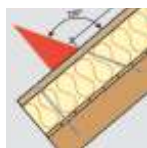


HT-S Solar double-threaded wood screw with large head A2/stainless steel

Name	Article No	Bits	Head Size	€/100	Psc/Box	ETA/CE
HT-S-SOLAR-S-8x240*	1489107	T40	18 mm		50	•
HT-S-SOLAR-S-8x300*	1489785	T40	18 mm		50	•
HT-S-SOLAR-S-8x360*	1489788	T40	18 mm		50	•

*Contact SFS intec for delivery times

Distance screw for insulated roofs and facades



Twin UD double-threaded self-drilling screw in reinforced steel, Durocoat rust protection and countersunk

Name	Article No	Bits	€/100	Psc/Box	ETA
UD-7,5x210	1512765	T40		50	•
UD-7,5x230	1512766	T40		50	•
UD-7,5x250	1512767	T40		50	•
UD-7,5x270	1512768	T40		50	•
UD-7,5x300	1512769	T40		50	•
UD-7,5x330	1512770	T40		50	•
UD-7,5x360	1512771	T40		50	•
UD-7,5x400	1512772	T40		50	•
UD-7,5x440	1512773	T40		50	•
UD-7,5x480	1512774	T40		50	•



HFP-Fully threaded wood screw with torx bit

Name	Article No	Bits	€/100	Psc/Box	ETA/CE
HFP-T-PH-FT-4,5X30	1507709	T25		500	•
HFP-T-PH-FT-4,5X40	1507710	T25		500	•
HFP-T-PH-FT-4,5X50	1507711	T25		500	•



HFP-Fully threaded stainless steel wood screw with Pz2 bit

Name	Article No	Bits	€/100	Psc/Box	ETA/CE
HFP-S-PH-FT-5,0X40	1522354	PZ2		200	•



HUT-Fully threaded wood screw with torx bit

Name	Article No	Bits	€/100	Psc/Box	ETA/CE
HUT-T-CS-FT-5X60	1517614	T25		200	•
HUT-T-CS-FT-5X80	1517618	T25		200	•
HUT-T-CS-FT-5X100	1517620	T25		100	•
HUT-T-CS-FT-5X120	1517631	T25		100	•
HUT-T-CS-FT-6X50	1517634	T30		200	•
HUT-T-CS-FT-6X70	1517635	T30		200	•
HUT-T-CS-FT-6X90	1517638	T30		100	•
HUT-T-CS-FT-6X120	1507705	T30		100	•



HT-Partially threaded wood screw with torx bit

Name	Article No	Bits	€/100	Psc/Box	ETA/CE
HT-T-CS-DT-8X160	1507845	T40		50	•
HT-T-CS-DT-8X200	1507846	T40		50	•
HT-T-CS-DT-8X240	1507847	T40		50	•
HT-T-CS-DT-8X280	1507844	T40		50	•
HT-T-CS-DT-8X300	1507848	T40		50	•
HT-T-CS-DT-8X330	1507849	T40		50	•
HT-T-CS-DT-8X360	1507850	T40		50	•
HT-T-CS-DT-8X400	1507851	T40		50	•
HT-T-CS-DT-8X450	1507852	T40		50	•
HT-T-CS-DT-8X500	1507853	T40		50	•
HT-T-CS-DT-10X260	1507854	T40		50	•
HT-T-CS-DT-10X300	1507855	T40		50	•
HT-T-CS-DT-10X340	1507856	T40		50	•
HT-T-CS-DT-10X380	1507857	T40		50	•
HT-T-CS-DT-10X420	1507858	T40		25	•
HT-T-CS-DT-10X460	1507859	T40		25	•



HFP-Partially threaded wood screw with torx bit

Name	Article No	Bits	€/100	Psc/Box	ETA/CE
HFP-T-CS-PT-5X40	1510598	T25		500	•
HFP-T-CS-PT-5X60	1548457	T25		200	•
HFP-T-CS-PT-5X80	1548458	T25		200	•
HFP-T-CS-PT-5X100	1548452	T25		100	•
HFP-T-CS-PT-5X120	1528608	T25		100	•

New!

Mounting of wood-based products or wooden constructions to wood



HT-T-CS Partially threaded wood screw with mill cutter and countersunk Electro-galvanised

Name	Article No	Bits	€/100	Psc/Box	ETA/CE
HT-T-CS-PT-4,0X45	1528380	T15		500	•
HT-T-CS-PT-4,0X60	1528393	T15		200	•
HT-T-CS-PT-5X50	1507712	T25		200	•
HT-T-CS-PT-5X70	1507713	T25		200	•
HT-T-CS-PT-5X90	1507714	T25		200	•
HT-T-CS-PT-5X120	1517366	T25		100	•
HT-T-CS-PT 6x60	1488526	T25		200	•
HT-T-CS-PT 6x80	1488977	T25		100	•
HT-T-CS-PT 6x90	1488979	T25		100	•
HT-T-CS-PT 6x100	1488980	T25		100	•
HT-T-CS-PT 6x120	1488993	T25		100	•
HT-T-CS-PT 6x140	1488994	T25		100	•
HT-T-CS-PT 6x160	1488997	T25		100	•
HT-T-CS-PT 6x180	1488999	T25		100	•
HT-T-CS-PT 6x200	1489003	T25		100	•
HT-T-CS-PT 6x220	1489007	T25		100	•
HT-T-CS-PT 6x240	1489008	T25		100	•
HT-T-CS-PT 6x260	1489009	T25		100	•
HT-T-CS-PT 6x280	1489012	T25		100	•
HT-T-CS-PT 6x300	1489016	T25		100	•
HT-T-CS-PT 8x80	1489315	T40		100	•
HT-T-CS-PT 8x100	1489316	T40		100	•
HT-T-CS-PT 8x120	1489317	T40		100	•
HT-T-CS-PT 8x140	1489318	T40		100	•
HT-T-CS-PT 8x160	1489319	T40		100	•
HT-T-CS-PT 8x180	1489321	T40		100	•
HT-T-CS-PT 8x200	1489022	T40		100	•
HT-T-CS-PT 8x220	1489323	T40		50	•
HT-T-CS-PT 8x240	1489024	T40		50	•
HT-T-CS-PT 8x260	1489420	T40		50	•
HT-T-CS-PT 8x280	1489431	T40		50	•
HT-T-CS-PT 8x300	1489432	T40		50	•
HT-T-CS-PT 8x320	1489433	T40		50	•
HT-T-CS-PT 8x340	1489434	T40		50	•
HT-T-CS-PT 8x360	1489436	T40		50	•
HT-T-CS-PT 8x380	1489437	T40		50	•
HT-T-CS-PT 8x400	1489439	T40		50	•
HT-T-CS-PT 8x420	1489499	T40		50	•
HT-T-CS-PT 8x460	1489500	T40		50	•
HT-T-CS-PT 8x500	1489511	T40		50	•

Continues on next page →

New!

Mounting of wood-based products or wooden constructions to wood

Name	Article No	Bits	€/100	Psc/Box	ETA/CE
HT-T-CS-PT 10x80	1489512	T40		50	•
HT-T-CS-PT 10x100	1489513	T40		50	•
HT-T-CS-PT 10x120	1489514	T40		50	•
HT-T-CS-PT 10x140	1489515	T40		50	•
HT-T-CS-PT 10x160	1489516	T40		50	•
HT-T-CS-PT 10x180	1489517	T40		50	•
HT-T-CS-PT 10x200	1489026	T40		50	•
HT-T-CS-PT 10x220	1489518	T40		50	•
HT-T-CS-PT 10x240	1489519	T40		50	•
HT-T-CS-PT 10x260	1489531	T40		50	•
HT-T-CS-PT 10x280	1489532	T40		50	•
HT-T-CS-PT 10x300	1489533	T40		50	•
HT-T-CS-PT 10x320	1489534	T40		50	•
HT-T-CS-PT 10x340	1489535	T40		50	•
HT-T-CS-PT 10x360	1489536	T40		50	•
HT-T-CS-PT 10x380	1489537	T40		50	•
HT-T-CS-PT 10x400	1489538	T40		50	•
HT-T-CS-PT 10x420	1489539	T40		50	•
HT-T-CS-PT 10x460	1489540	T40		50	•
HT-T-CS-PT 10x500	1489551	T40		50	•

New!

Patio screw



HT-S-CS Partially threaded countersunk wood screw in A2/stainless steel

Name	Article No	Bits	€/100	Psc/Box	ETA/CE
HT-S-CS-PT-5x40	1489600	T25		200	•
HT-S-CS-PT-5x45	1489624	T25		200	•
HT-S-CS-PT-5x50	1489625	T25		200	•
HT-S-CS-PT-5x60	1489093	T25		200	•
HT-S-CS-PT-5x70	1489764	T25		200	•
HT-S-CS-PT-5x80	1489770	T25		200	•

Continues on next page →

New!

Mounting of wood-based products to wood

Name	Article No	Bits	€/100	Psc/Box	ETA/CE
HT-S-CS-PT-6x60	1507916	T25		200	•
HT-S-CS-PT-6x70	1507917	T25		200	•
HT-S-CS-PT-6x80	1507918	T25		100	•
HT-S-CS-PT-6x90	1507919	T25		100	•
HT-S-CS-PT-6x100	1507920	T25		100	•
HT-S-CS-PT-6x110	1507931	T25		100	•
HT-S-CS-PT-6x120	1507932	T25		100	•
HT-S-CS-PT-6x140	1507933	T25		100	•
HT-S-CS-PT-6x160	1507934	T25		100	•
HT-S-CS-PT-8x80	1507935	T40		100	•
HT-S-CS-PT-8x100	1507936	T40		100	•
HT-S-CS-PT-8x120	1507937	T40		100	•
HT-S-CS-PT-8x140	1507938	T40		100	•
HT-S-CS-PT-8x160	1507939	T40		100	•
HT-S-CS-PT-8x180	1507940	T40		100	•
HT-S-CS-PT-8x200	1507941	T40		100	•
HT-S-CS-PT-8x220	1507942	T40		50	•
HT-S-CS-PT-8x240	1507943	T40		50	•
HT-S-CS-PT-8x280	1507945	T40		50	•
HT-S-CS-PT-8x340	1507948	T40		50	•
HT-S-CS-PT-8x400	1507951	T40		50	•

New!

Patio screws



HT-S-RCS-DT Double-threaded patio screw, countersunk A2/stainless steel

Name	Article No	Bits	€/100	Psc/Box	ETA/CE
HT-S-RCS-DT-5x50	1489761	T20		200	•
HT-S-RCS-DT-5x70	1489767	T20		200	•
HT-S-RCS-DT-5x80	1489781	T20		200	•

*Contact SFS intec for prices and delivery times for A4/Acid-resistant quality

New!

Wood screw with varied thread pitch for wooden facades/panels in A2



HUT-S-RCS-FT Fully threaded wood screw, countersunk for facades/panels A2/stainless steel

Name	Article No	Bits	€/100	Psc/Box	ETA/CE
HUT-S-RCS-FT-4,5x50	1489556	T20		200	•
HUT-S-RCS-FT-4,5x60	1489152	T20		200	•
HUT-S-RCS-FT-4,5x70	1489557	T20		200	•
HUT-S-RCS-FT-4,5x80	1489558	T20		200	•
					•
HUT-S-RCS-FT-5x40	1489559	T20		200	•
HUT-S-RCS-FT-5x50	1489162	T20		200	•
HUT-S-RCS-FT-5x60	1489592	T20		200	•
HUT-S-RCS-FT-5x70	1489593	T20		200	•
HUT-S-RCS-FT-5x80	1489595	T20		200	•

New!

HUT-T-FB-FT Fully threaded wood screw, countersunk for wooden facades/floors Electro-galvanised



HUT-T-FB-FT Fully threaded countersunk wood screw for wooden floors/plates

Name	Article No	Bits	€/100	Psc/Box	ETA/CE
HUT-T-FB-FT-3,5x40	1488379	T10		500	•
HUT-T-FB-FT-3,5x50	1488525	T10		500	•
					•
HUT-T-FB-FT-3,5x60	1540358	T10		200	•
					•
HUT-T-FB-FT-4x70	1540370	T15		200	•
					•
HUT-T-FB-FT-4,5x50	1507681	T20		200	•
HUT-T-FB-FT-4,5x70	1507686	T20		200	•

Wood screw for mounting wood to wood



TS wood screw, Durocoat surface-treated - TX25 internal propulsion

Name	Article No	Bits	€/100	Psc/Box	ETA/CE	Sintef	KLA
TS-T25-6,0x60	1352259	TX25		500	•	•	•
TS-T25-6,0x80	1352261	TX25		500	•	•	•
TS-T25-6,0x100	1352263	TX25		500	•	•	•
TS-T25-6,0x130	1352266	TX25		500	•	•	•
TS-T25-6,0x160	1352268	TX25		250	•	•	•
TS-T25-6,0x200	1352270	TX25		250	•	•	•
TS-T25-6,0x240	1352272	TX25		250	•	•	•

Wood screw and washer for mounting coatings and insulation



IWF Fully threaded wood screw in carbon steel - Duracoat surface treated

Name	Article No	Bits	€/100	Psc/Box	ETA/CE	Sintef
IWF-5,2x25	1185141	PH2		1000	•	•
IWF-5,2x35	1185146	PH2		1000	•	•
IWF-5,2x45	1193131	PH2		1000	•	•
IWF-5,2x55	1090632	PH2		500	•	•
IWF-5,2x75	1288113	PH2		500	•	•



MW-40-F/B40 washer - Duracoat surface treated

Name	Article No	€/100	Psc/Box
MW-40-F/B40	628434		500

Mounting of wood-based materials to steel



SCS drill screw in authentic stainless steel 18/8, A2

Name	Article No	Bits	Drill cap min-max	Clamp length max	€/100	Psc/Box
SCS3/25-7982/PH2-4,8x42	1282666	PH2	1,0 – 3,0	27		250
SCS3/25-7982/PH2-4,8x72	1282665	PH2	1,0 – 3,0	57		250
SCS5/34-D10/T30-5,5x55	1152443	T30	2,0 – 5,0	34		250
SCS5/54-D10/T30-5,5x75	1152444	T30	2,0 – 5,0	54		250

SC drill screw in reinforced steel, surface treated

Name	Article No	Bits	Drill cap min-max	Clamp length max	€/100	Psc/Box
SC2/21-PH2-4,2x30	844488	T30	0,7 – 2,0	21		1000
SC2/31-PH2-4,2x40	844770	T30	0,7 – 2,0	31		1000
SC3/25-PH2-4,8x35	844771	T30	1,0 – 3,0	25		1000
SC3/35-PH2-4,8x45	1085781	T30	1,0 – 3,0	35		1000
SC3/55-PH2-4,8x65	1068872	T30	1,0 – 3,0	55		1000

SC drill screw in reinforced steel, surface treated

Name	Article No	Bits	Drill cap min-max	Clamp length max	€/100	Psc/Box
SC5/36-DS12-5,5x50*	713811	T30	2 – 5	36		1000
SC5/46-DS12-5,5x60*	713817	T30	2 – 5	46		1000
SC5/66-DS12-5,5x80*	1068860	T30	2 – 5	66		500
SC5/101-DS12-5,5x115*	676891	T30	2 – 5	101		500
SC6/29-12-U6,3x45*	934066	T30	2,5 – 6	29		1000
SC6/44-12-U6,3x60*	934071	T30	2,5 – 6	44		1000
SC6/54-12-U6,3x70*	934074	T30	2,5 – 6	54		500
SC6/64-12-U6,3x80*	934076	T30	2,5 – 6	64		500
SC6/69-12-U6,3x85*	934078	T30	2,5 – 6	69		500
SC8/41-12-HP6,3x60*	1033858	T30	3 – 8	41		500
SC8/51-12-HP6,3x70*	1018715	T30	3 – 8	51		250
SC8/72-12-HP6,3x90*	1125155	T30	3 – 8	71		500
SC8/92-12-HP6,3x110*	1153552	T30	3 – 8	91		250

*Contact SFS intec for prices and delivery times