

Certificate of Test



For: SFS Group Fastening Technology Ltd
153 Kirkstall Road
(Opposite Yorkshire TV)
Leeds
LS4 2AT

Our reference: SPC3284R8H7 Issue 2
Date: 22/09/2023

Product Description SOTER II
Horizontal lifeline and single point anchor

For the purpose of testing, the combination of technical reports included in this certificate reflect testing of anchor devices installed on 80mm composite panels with a 0.55mm top sheet mounted on titan bar steel sections and concrete substrate, with test forces applied in a horizontal direction

Test Data

Testing carried out in accordance with AS/NZS 1891.2: 2001~~≠~~, EN 795: 2012, CEN/TS 16415: 2013~~≠~~, and UNI 11578: 2015~~≠~~ (Types A & C) following clauses only:

EN 795: 2012

4.1 General	PASS
4.2 Materials	PASS
4.3 Design and Ergonomics	PASS
4.4 Specific Requirements – Type C	PASS
4.4 Specific Requirements – Type C (12m span)	PASS

CEN/TS 16415: 2013~~≠~~

4.1 General	PASS
4.2 Specific Requirements – Type C	PASS
4.2 Specific Requirements – Type C (12m span)	PASS

UNI 11578: 2015~~≠~~ Type C

4.1 General	PASS
4.2 Materials	PASS
4.3 Design and Ergonomics	PASS
4.4 Specific Requirements – Type C	PASS

UNI 11578: 2015~~≠~~ Type A

4.1 General	PASS
4.2 Materials	PASS
4.3 Design and Ergonomics	PASS
4.4 Specific Requirements – Type A	PASS

AS/NZS 1891.2: 2001~~≠~~

2.2 Metal Components – General Requirements	PASS
2.3 Flexible Lines and Line Terminations	Not Fully Assessed
2.4 Line Termination Fittings	PASS
2.5 Line Anchorages	PASS
2.6 Mobile Attachment Devices	Not Fully Assessed
3.2.1 Horizontal Lifeline Systems – Design Requirements	Not Fully Assessed
3.2.2 Horizontal Lifeline Systems – Performance Requirements – a) Dynamic Performance	PASS
3.2.2 Horizontal Lifeline Systems – Performance Requirements – b) Static Strength	PASS

The product referenced “SOTER II” complies with the clauses of AS/NZS 1891.2: 2001~~≠~~, EN 795: 2012, CEN/TS 16415: 2013~~≠~~, and UNI 11578: 2015~~≠~~ stated above.

SIGNATURE:
Jake Bellingham
PPE Technologist
Safety Products Centre

Full details of test data provided in the following report:

- EN 795: 2012 & CEN/TS 16415: 2013# (4 users) - SPC0257234 /1719 /1 Issue 2 dated the 5th of August 2017
- EN 795: 2012 & CEN/TS 16415: 2013# (12m span, 4 Users) – SPC0283709 /1915 Issue 2 dated the 17th of July 2019
- UNI 11578: 2015# Type C (4 Users) - SPC0257234 /1719 /2 Issue 2 dated the 5th of August 2017
- UNI 11578: 2015# Type A – SPC0265141 /1749 /2 dated the 22nd of February 2018
- AS/NZS 1891.2: 2001# – SPC0272005 /1824 /1 dated the 27th of July 2018

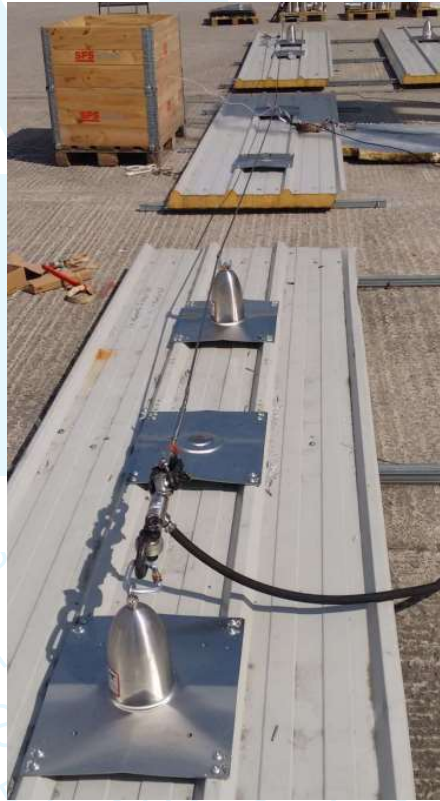


Figure 1 – Sample referenced as “SOTER II”



Figure 2 – Sample referenced as “SOTER II”

SIGNATURE:
Jake Bellingham
PPE Technologist
Safety Products Centre



Figure 3 – Horizontal anchor line components described as “SOTER II”

SIGNATURE:
Jake Bellingham
PPE Technologist
Safety Products Centre



Figure 4 – Horizontal Lifeline described as “SOTER II”

SIGNATURE:
Jake Bellingham
PPE Technologist
Safety Products Centre



Figure 5 – Horizontal anchor line described as “SOTER II”

1. This report is designed to indicate the performance of the sample tested by SATRA. SATRA have not approved the on-going quality control. It is the responsibility of purchasers to satisfy themselves that other production batches perform similarly.
2. Please refer to original test report stated above for terms and conditions

SATRA Technology Centre Ltd. A subsidiary of SATRA. Registered in England No. 3856296
SATRA, Wyndham Way, Telford Way, Kettering, Northants, NN16 8SD, England
Telephone: (01536) 410000. International + 44 1536 410000. Facsimile: (01536) 410626. e-mail:
info@satra.co.uk

SIGNATURE:
Jake Bellingham
PPE Technologist
Safety Products Centre