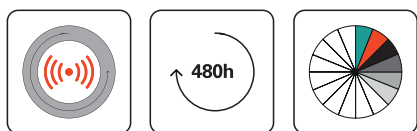
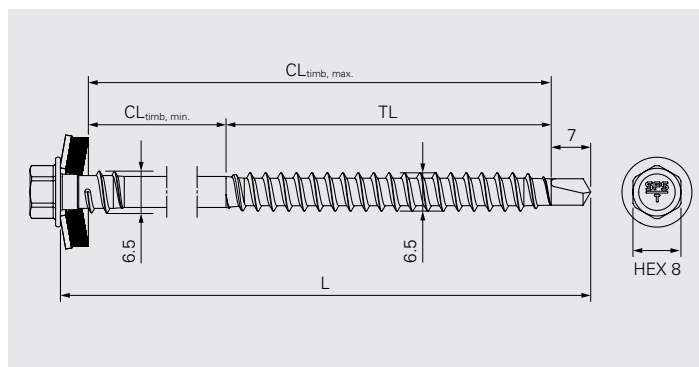
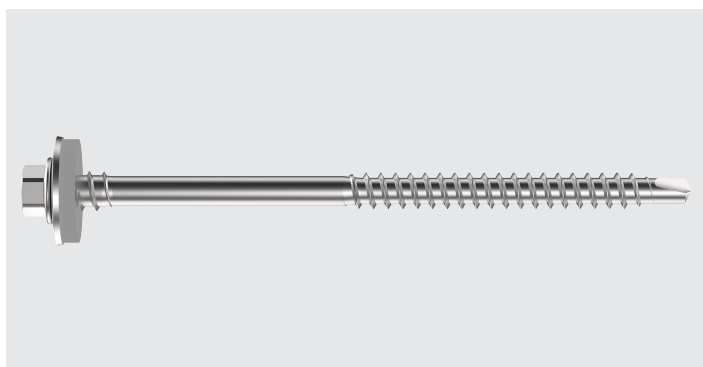


# SDTW-6.5



## Application

Fastening of sandwich panels onto timber  
Fastening of profile sheets onto timber

Component 1 ( $t_1 / t_{NII}$ )	Component 2 ( $t_{II}$ )	$\Sigma_{\max} t_1 + t_{II}$
Sandwich panel $\geq 0.40$	Timber $l_{ef} \geq 35.0$	—

## Fastener material

Carbon steel, Durocoat® 480  
Sealing washer: Aluminium, EPDM-seal

## Approvals



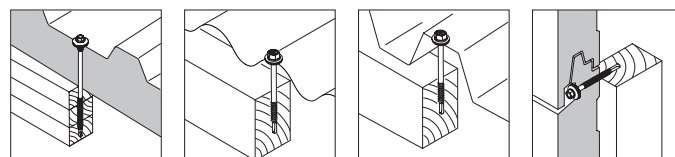
## Features and Benefits

- Self drilling fastener suitable for installation of sandwich panels onto timber
- High quality EPDM sealing washer for long-term weather sealing
- Perfect supporting of the sandwich panel outer-skin given by support thread with cut-off thread-end
- Reduced risks of timber splitting given by the drill point
- High bending capacity for absorption of thermal expansion of the sandwich panel outer-skin
- High corrosion durability thanks to special galvanic zinc coating

## Documentation

Approval document (ETA) | Declaration of performance (DoP)

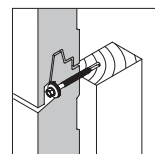
All measures in mm



## Fastener in carbon steel onto timber

Product code	PU	L	TL	CL <sub>timb</sub>	t <sub>fix, timb</sub>	A19
SDTW-A19-6,5×75	100	75	50	17–65	17–30	937840
SDTW-A19-6,5×115	100	115	65	42–105	42–70	911329
SDTW-A19-6,5×125	100	125	65	52–115	52–80	937842
SDTW-A19-6,5×135	100	135	65	62–125	62–90	937845
SDTW-A19-6,5×150	100	150	65	77–140	77–105	1222803

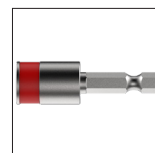
t<sub>fix, timb</sub>: CL<sub>timb, min.</sub> – (CL<sub>timb, max.</sub> – l<sub>ef, min.</sub>)



## Fastener in carbon steel onto timber

Product code	PU	L	TL	CL <sub>timb</sub>	t <sub>fix, timb</sub>	No washer
SDTW-6,5×75	100	75	50	20–68	20–33	743764
SDTW-6,5×115	100	115	65	45–108	45–73	1047815
SDTW-6,5×125	100	125	65	55–118	55–83	1346440
SDTW-6,5×135	100	135	65	65–128	65–93	701545
SDTW-6,5×150	100	150	65	80–143	80–108	1237209

t<sub>fix, timb</sub>: CL<sub>timb, min.</sub> – (CL<sub>timb, max.</sub> – l<sub>ef, min.</sub>)



## Accessories/Ancillaries

Product code	PU	Drive	Head drive	
E308-¼"-50	1	¼"	HEX8	1646160

### All measures in mm

All information is non-binding and without guarantee. Before using the products, all specifications and calculations must be checked by a suitably qualified person and local regulations must be observed. This document is subject to revision. We reserve the right to make technical changes.